



## MATERIALS

The bench is made from the following materials:

- Frame:  
GALVANISED STAINLESS STEEL
- Seat & Backrest:  
HARDWOOD IROKO TIMBER SLATS

The bench should be bolted to an appropriate substrate to the ground.



## DIMENSIONS

Length: 2500mm

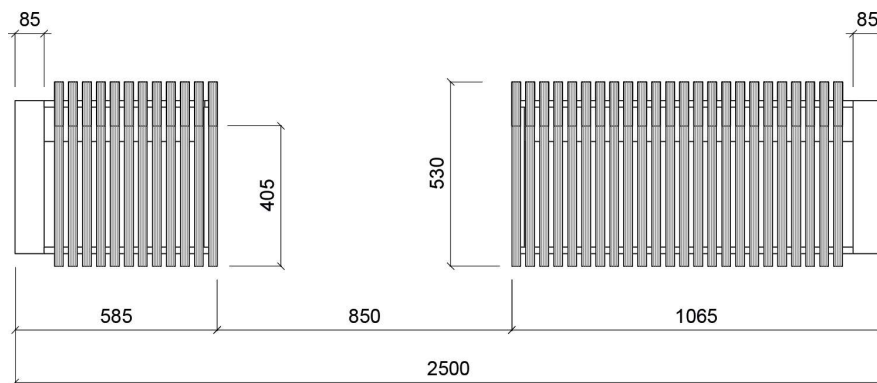
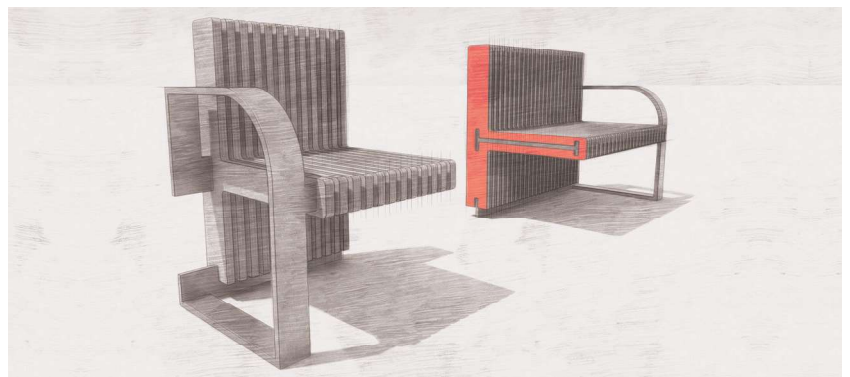
Seat Depth: 405mm

Total Depth: 530mm

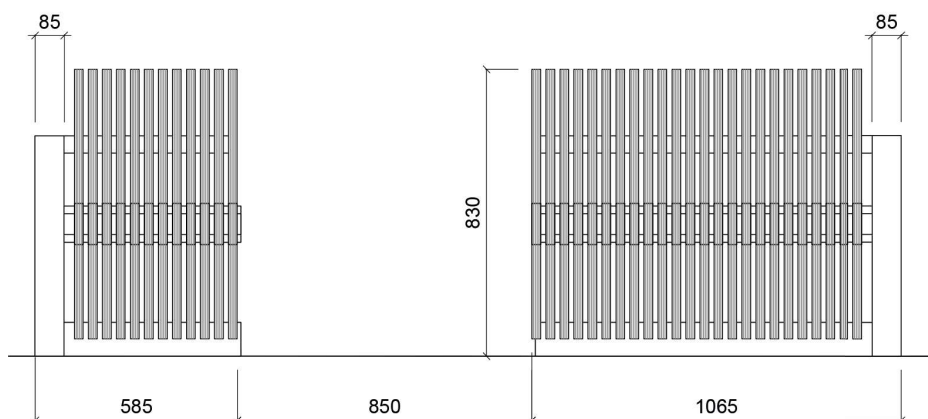
Seat Height: 440mm

Total Height: 830mm

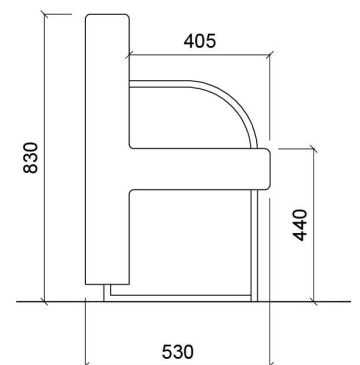
Advised Gap For Wheelchair: 850mm



PLAN VIEW



FRONT ELEVATION VIEW



SECTION VIEW

All dimensions are in millimeters, weights in kilograms and capacities in litres, are approximate and do not form any part of the contract. All prices are guide prices only and should be used for estimating purposes only. GAMMA Concepts Limited reserve the right to change the design, specification or price of any item sold at any time. All prices exclude VAT and delivery.